



Unlock Your Crop Potential With

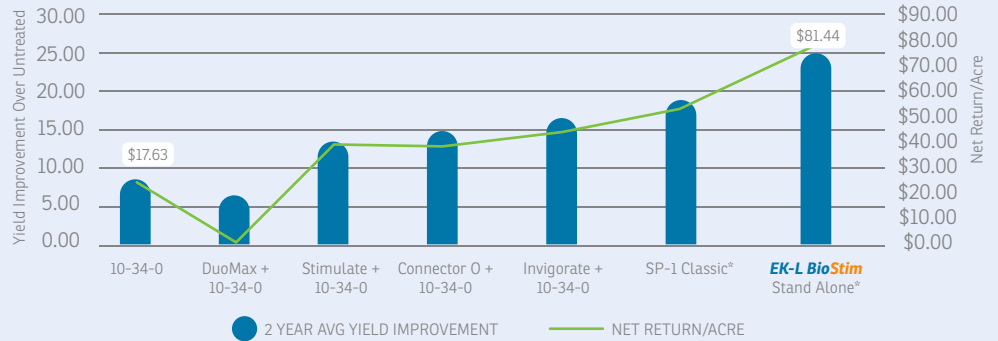
EK-L BioStim EK-L BioStim is a naturally derived liquid biofertilizer with benefits from planting to harvest.

Start Your Crops Off Right

EK-L BioStim directly impacts plant productivity and enhances soil health to improve your yields.

EK-L BioStim Corn Starter Stands Alone

Two-year corn trials in central Ohio demonstrated EK-L BioStim's positive influence on yield and ROI vs competitive starter options. A single 5-gallon in-furrow application of EK-L BioStim results in a 3.6x greater return than 10-34-0. Other noted benefits included overall crop uniformity and better tolerance to weather stresses. (Return/acre assumes \$4.25/bu corn and \$3.55/gal for 10-34-0.)



Ag Products Research; Starter Product Trial - Sardinia, Ohio, 2022 & 2023
Study design: comparison of manufacturer recommended application rates plus 5 gal 10-34-0 SP-1 3 gal 10-34-0 *SP-1 and EK-L BioStim no 10-34-0

This Is a "Must-Have" Product!

"We started evaluating and using EnviroKure EK-L BioStim 6 years ago and have incorporated it into our corn, soybeans, and wheat programs. It's proven to bring higher yields at harvest.

As a corn starter, we have repeatedly seen enhanced root growth compared to a 10-34-0 starter. In fact, we are so pleased with this product that **we replaced all 10-34-0** in our corn program.

Mark Bryant, Bryant Ag Enterprises, Washington Court House, OH

EK-L BioStim Is Adaptable and Easy to Use

EK-L BioStim fits into your program and can be used alone or combined with most crop inputs. You can apply pre-plant, at-planting, or multiple in-season applications.



Soil, seed, and plant safe



No clogging - filtered through 250 mesh screens



No application restrictions - no re-entry or harvest restrictions

Crop	Application Rate	Benefits
Corn Starter	3 gal/acre added to starter nutrient or 5 gal/acre as a stand-alone starter	<ul style="list-style-type: none"> • Healthier soil • Earlier emergence
Corn Foliar	1-5 gal/acre alone or combined with other foliar inputs	<ul style="list-style-type: none"> • Stronger roots
Soybeans	3-5 gal/acre with liquid fertility	<ul style="list-style-type: none"> • Improve nutrient efficiency
Wheat	3-5 gal/acre with topdress nutrition	



EK-L BioStim For Superior Performance

Better Soil + Stronger Plants + Enhanced Stress Tolerance = Improved Yields



ENHANCED SOIL HEALTH

Increased soil biodiversity and signal native microbial communities



MEASURABLE IMPROVEMENT

in Nutrient Uptake, optimizing nitrogen-cycling, phosphorus and sulfur solubilization, and overall nutrient availability and acquisition

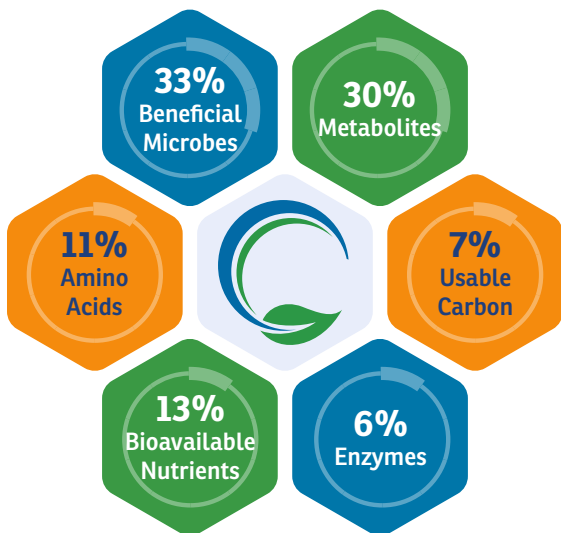


IMPROVED TOLERANCE

to Weather-related Stress, including excessive cold, heat, rainfall, and drought

Managing the Uncontrollable: Weather

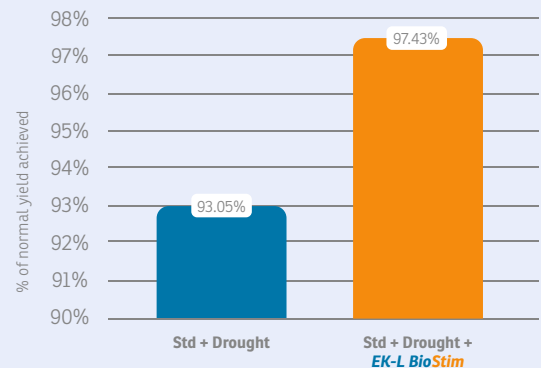
You can have the best fertility plan and excellent seed, but you can't control the negative impact of weather on your crops. **EK-L BioStim** helps plants cope with unexpected cold, heat, rainfall, and drought by building more resilient plants and a stronger response to weather-related stress.



% of active compounds

Protect Your Corn Yield During Drought

97.43% of normal yield realized with **EK-L BioStim** in-furrow and a net return of \$15.25/acre. (Return assumes \$4.25/bu corn)



Source: EnviroKure internal study

EK-L BioStim provides the essentials you need to produce the results you want

- Beneficial Microbes** diversify and feed soil microbiome
- Metabolites & Organic Acids** for better roots, reduced stress, and more resilient plants
- Amino Acids** building blocks for all plant growth
- Enzymes** breakdown nutrients and organic matter for plant uptake
- Bioavailable Nutrients** are immediately available for young plants
- Usable Carbon** provides energy for plants and microbes to thrive



See what **EK-L BioStim** can do for you!



9408 Rosedale Road, Hicksville, OH 43526
215-289-9800
envirokure.com | info@envirokure.com